



BUTTERFLY CONSERVATION SA INC.

NEWSLETTER

No. 45: July, 2012

COMMON MOTHS OF THE ADELAIDE REGION POSTERS

Butterfly Conservation SA has been advocating for the improvement in knowledge and practice about butterflies and moths since its formation in 1999 and was delighted to receive funding to prepare two '**Common Moths of the Adelaide Region**' posters to increase the understanding of these important insects.

The posters will be available in September and bring to you a few images of the 1000s of moths in our local environment. South Australia has a very large moth fauna and we learn more about these wonderful insects every day. There is no single field guide and often the identification of these insects can only be made to Genus level.

This display of common moths has been assembled from several collections, including those of Brian Cartwright and Roger Grund, and this poster series will introduce the viewer to the wonderful world of moths. We are indebted to these volunteers and to Peter McQuillan for his time in reviewing the images and confirming identification of each image.

Continued on page 3.

IN THIS ISSUE

- Moth Posters
- Public Talks Program 2012
- Excursion to Kangarilla
- *Lucia limbaria* update
- Notices
- Help with Access needed
- Invitation
- *Ctenophusia albostrata*
- Nomination form
- Meadow Argus fact sheet
- Rediscovery of the Desert sand-skipper
- SA butterfly ID charts
- Notices
- AGM notice of meeting
- New members
- Diary Dates and notes



Committee members Gerry Butler and David Keane with Peter McQuillan (right) working on the Moth poster in the Library of the SAMuseum. Photo: Jan Forrest

Some moth images from the poster:

Centre top: Fam. Geometridae, Hakea Moth, *Oenochroma vinaria* Photo: Brian Cartwright

Right top: Fam. Lymantriidae, Painted Apple Moth, *Teia anartoides* Photo: Gerhardt Weber

Left above: Fam. Saturniidae, Helena Gum Moth (f) *Antheraea helena* Mike Gemmell

Centre above: Fam. Lasiocampidae Gum Snout Moth, *Entometa fervens* Photo: Roger Grund

Right: Fam. Arctiidae, Magpie Moth, *Nyctemera amicus* Photo: Brian Cartwright.

Continued on page 3.

See Page 3 for INVITATON TO POSTER LAUNCH

BUTTERFLY CONSERVATION SA. INC. for membership enquiries and annual membership payments (\$10):
Treasurer: 5 Oakleigh Road, MARION. 5043 S.AUST.

PUBLIC TALKS PROGRAM

On the first Tuesday of the month March to November at 6.15pm for a prompt 6.30pm start.

At the Clarence Park Community Centre
72-74 East Avenue, Black Forest.
Bus route W91/W90: stop 10.
Noarlunga Train service: Clarence Park Station
Glenelg Tram: Forestville stop 4, 9min walk south.

Entry by donation (minimum of \$2).
Please bring supper to share, tea/coffee will be supplied.
Meetings should conclude by 8.30pm.

At the start of each meeting (other than in Aug) a ten minute presentation on a 'Butterfly of the Month' will be given by a BCSA committee member.

7th Aug. BCSA AGM at 6.30 Talk commences 7.00pm
"Native Bees" Many of our native bees have remarkable and interesting life histories, hear about them and what you can do in your garden to attract them from Museum researcher Dr. Remko Leijds.

4th Sept. **"Adelaide Moths"** BCSA Life Member Roger Grund has spent the previous year investigating the moths in his backyard on the hills-face at Torrens Park. He will talk about those findings with images of a variety of moths seen, including some early stage images.

2nd Oct. **"Antarctic Peninsula January – March 2009: wild-life, scenery and tour guiding."** Hon. Research Associate at the SAMuseum Dr. Peter Shaughnessy has studied marine mammals for over 40 years His talk will provide visitors with a glimpse into Antarctic life including, seals and seabirds.

6th Nov. **"Bats – survivors in todays"** world" Adelaide's own batman Terry Reardon will provide a fascinating insight into the habits of South Australian bats and how you can help to conserve them.

In the case of an advertised speaker not being available, a speaker of similar interest will replace that advertised.

WE PROPOSE TO PROVIDE A SIMILAR PUBLIC TALKS PROGRAM DURING 2013.

If you have contact details of suitable speakers please contact Secretary Jan Forrest 8297 8230

EXCURSION TO A 70 acre BUSH PROPERTY NEAR KANGARILLA

on Saturday 22nd September at 11.00am

Please register your interest in attending by contacting Jill Davy 83736772 or Secretary Jan Forrest 82978230 (after 9th Sept.)

**some walking will be required
bring: lunch and rug/groundsheet to sit on**

**Meet near the main house at 11.00am
Address: 238 Harper Road
Follow Dashwood Gully Road, to Hillyfields Road, then to Harper Road (no thru rd).**

UPDATE ON *Lucia limbaria* AT VICTORIA PARK

Recently committee members Roger Grund, Mike Moore and Jan Forrest met in the parklands with staff from the Adelaide City Council and those involved in the planning of the proposed Keswick stormwater detention basin.

During discussions, a management plan for the *Lucia limbaria* butterfly site at Victoria Park evolved including identifying areas where reintroduction of further host plants would be of benefit. Some modifications to the draft stormwater detention plans were also suggested. It is hoped that these suggestions will lessen the impact this project will have on the *Lucia limbaria* site.

If you are interested in being involved please contact BCSA committee member Gerry Butler gerry.butler@ozemail.com.au or alternatively the South Parklands Landcare Group or Parklands Preservation Society.

OPEN DAY AT PARA WIRRA

16th September, 2012

organised by Friends of Para Wirra to celebrate 50th Anniversary of the declaration of the park.

NATIONAL TREE DAY

Sunday 27th July

(schools day Friday 27th July)

Since 1996 more than 2.8 million volunteers have planted over 17 million native trees, shrubs and grasses on National Tree Day events across the country. To register a National Tree Day activity, to find out more or to download the special logo for use at your event, visit

www.treeday.planetark.org
or call the national Tree Day hotline on
1300 88 5000.

NATIONAL RELEASE OF AUSTRALIA'S WEEDS OF NATIONAL SIGNIFICANCE

12 additional weeds have been added to the list -

- | | |
|----------------------|-------------------------|
| • African boxthorn | • gamba grass |
| • Asparagus weeds | • madeira vine |
| • bellyache bush | • opuntoid cacti |
| • brooms | • sagittaris |
| • cat's claw creeper | • silverleaf nightshade |
| • fireweed | • water hyacinth |

Please go to the following link for more information:
<http://www.weeds.org.au/WoNS/>

BCSA BOOKS

We have a number of books in storage as our 'library' and thoughts from members (to Secretary) as how to best use this wonderful resource would be appreciated.

BOOKS FOR SALE

Orr, Albert and Roger Kitching.
"Butterflies of Australia". Crows Nest: 2010. Quarto, paperback, 336 pp., colour illustrations, line drawings, maps AU\$45.00 from Andrew Isles books.

A unique guide to help identify the nearly 400 Australian species..



Most moths emerge in Spring, but occasionally moths will persist in the hotter summer months and some will emerge in Autumn as temperatures drop and humidity increases with more frequent rain. They can be as exciting to watch as butterflies and whilst most moths fly at night there are also day-flying moths.

Distinctively night flying moths are often drab in general, but their hind-wings will often be brightly coloured to deter predatory birds. The day flying moths can often be brightly coloured and as beautiful as butterflies. Bright colours often signify that the insect is distasteful and are not just restricted to wing colour but also to the colourful markings on their bodies.

When settled, moths usually rest with their forewings folded over their hindwings and will often fold their antennae beneath their wings. Some moths will rest with flattened wings, but very few moths rest with their wings upright and open like butterflies.

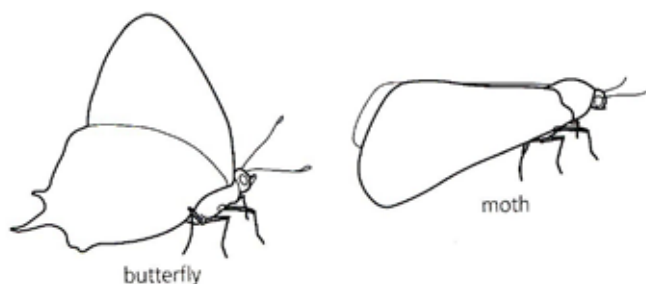
There are about 11,000 species of moths described in Australia (Neilsen et al, 1996) and a similar number are thought to be un-described. A lot less is known about South Australian moths than butterflies in South Australia. Butterfly Conservation SA anticipates that with more publicity about moths and butterflies that information about their habits and food hosts will be provided by the community. You are encouraged to contact Butterfly Conservation SA with your observations and these will be published in the quarterly newsletter and on the website.

The two posters have been funded by: Adelaide and Mount Lofty Ranges Natural Resources Management Board Achiever Grant.

Gerry Butler



Chairman David Keane and Secretary Jan Forrest with Peter McQuillan at the SAMuseum, Photo: Gerry Butler



INVITATION TO ALL BCSA MEMBERS

to attend the launch of the moth posters
on Saturday 6th October
at the Australian Plants Society plant sale and
flower show

Wayville showgrounds at 2.00pm
(entry cost per person to the show \$3)

RSVP (for catering purposes) to Jill Davy
83736772 by Friday 28th September, 2012.

HELP NEEDED WITH MEMBERSHIP DATABASE IN ACCESS.

Can any member with knowledge of Access provide some technical assistance to the Secretary Jan Forrest with the membership database please.

We are using Access 2000! The database structure was changed recently to provide sub tables for each membership year to more easily keep track of renewals and those members who have paid in advance however although new entries show on the main table these are now not reflected in new queries and old queries are not being updated.

If you have knowledge that can assist please contact Jan on 08 82978230. As we are using the old program you may need to look at it on Jan's computer at Clarence Park.

Thanks in advance.

ANNUAL GENERAL MEETING

7th August, 2012

6.30 - 7.00pm

before Remko's talk on Native Bees

A nomination form is included with this newsletter. Please consider accepting a position on the committee. It is not onerous as we meet bi-monthly in the comfort of a member's home.

Feel free to nominate yourself.

Most existing members have agreed to re-stand however it would be nice to have some new members in particular we are looking for a new **Chairman** as David Keane after five years in the job has decided not to stand this year although he will continue on the committee.

If you are interested please let us know.

Ctenoplusia albostrigata

When I first discovered these caterpillars feeding on a daisy bush in a hanging basket under my pergola, I thought they were cabbage moth larva. There was a mix of young and mature larva, eating the fresh young growth with great delight, sometime later I found a cocoon and realised that they weren't cabbage moths.

The larva had spun a silken cocoon between two living leaves of the plant to conceal it from the weather or predators. The pupa was the same colour as the caterpillar and the daisy bush. After 15 to 16 days the body colour began to turn a lemon green colour. By the 19th day the pupas back began to darken and this slowly spread between the segments of the abdomen and down the thorax. The wing turned a tan colour and by the 24th day it had turned a chocolate brown, the pupa continued to darken (black back and wings with brown flanks) until it emerged early on the evening of the 6/11/10 between 7:30pm and 8:30pm after a warm day with cloud build-up in the late afternoon and into the evening.

The food plant *Erigeron karvinskianus* (seaside daisy) a native perennial of Mexico is quite a common plant in the gardens across Adelaide, however it is a weed in the Adelaide hills. It is often covered in numerous small white and pink flowers.

The recorded range for this moth is from the East Coast, it occurs from Cairns and the Atherton Tableland to Southern New South Wales, its appearance in Adelaide is more than likely connected with the transportation of the food plant across state borders either by the nursery trade or by people moving here.

Eggs and larva would be hard to see, with the food plant already firmly established in Adelaide, this moth has gained foothold. The larva of this moth has also been found feeding on other Asteraceae in the Eastern States.

This species does not seem to have a common name.

Notes:

- Pupated Oct 1st
- Changed colour 18th – 19th
- Pupal duration 36 days
- Pupa 18mm
- Cocoon 20 mm



Photos Andrew Lines, from top: mature larva, mature pupa, adult and host plant seaside daisy.

References:

- Moths of Australia By I.F.B Common Melbourne University Press 1990
- Australian Complete Book of Flowers S. Macoboy & A. Blombery 1975 Dee Why West NSW

Andrew Lines

ANNUAL GENERAL MEETING 7th August at 6.30pm see notice on page 3

NOMINATION FORM - BUTTERFLY CONSERVATION SA INC.

**At the AGM all positions will be declared vacant:
positions available include: Chairman, Secretary, Treasurer, committee members.**

I would like to nominate to the position of

NAME of proposer..... Signature

NAME of seconder Signature

I accept nominationSignature of the person being proposed.

Please forward nomination forms to:

Acting Secretary Beth Keane, c/- PO, INGLEWOOD 5133 by close of business on 1st August, 2012.

BUTTERFLY CONSERVATION SA Inc. FACT SHEET *Junonia villida* page 1

Meadow Argus

Class: Insecta
Order: Lepidoptera
Family: Nymphalidae
Genus: *Junonia*
Species: *villida*
Subspecies: *calybe*

This butterfly belongs to the Argus group which is distinguished by the same wing pattern that includes 'large eyespots' or ocelli. These 'eyes' are thought to be used by the butterfly to confuse or frighten predators, especially birds, when attacked. The Meadow Argus occasionally migrates in large numbers. This is mainly in the southern direction during spring, with a lesser northerly migration in autumn. While there have been no reports of mass migration from South Australia, small numbers of these butterflies regularly appear in urban Adelaide during early spring, usually accompanied by the Australian Painted Lady *Vanessa kershawi*, which is probably the result of small migrations from the northern pastoral areas.

Description

Wingspan: male 40mm; female 43mm.

Upperside: Dark brown. On forewing, both males and females have one large blue eyespot broadly. The hindwing has two eyespots.

Underside: Pale buff brown with one large eyespot on the forewing.



Photo: adult underside LFHunt



Photos: egg, larva and pupa RHFisher.
 Adult upperside RHFisher



**BUTTERFLY
 CONSERVATION
 SA. Inc.**

C/- SA Museum
 North Terrace,
 ADELAIDE 5000
 S. AUSTRALIA

BUTTERFLY CONSERVATION SA Inc. FACT SHEET *Junonia villida* page 2**Larval Foodplants**

The larvae feed on numerous native and introduced herbaceous plants. The native plants include *Goodenia geniculata* and *G. pinnatifida*, *Portulaca oleracea* (munyeroo, purslane or pigweed), *Scaevola aemula* (fairy fanflower) and *Stemodia florulenta* (bluerod).

Among the introduced plants: *Centaureum spicatum* (spike centauray), *Plantago lanceolata* (ribgrass or ribwort), *Antirrhinum majus* (garden snapdragon), *Kickxia elatine* (toadflax), *Phyla canescens* (lippia), *Verbena* spp. and *Scabiosa atropurpurea* (scabious).

Habitat and Ecology

The Meadow Argus is found wherever its food plants occur, and these are common and widespread occurring in most habitats.

Distribution

The Meadow Argus occurs throughout mainland Australia and most of Tasmania, as well as a number of adjacent islands. It is common both in coastal and inland areas (common in desert areas after rain), although there are few records from the deserts of the arid zone.

**Flight Period**

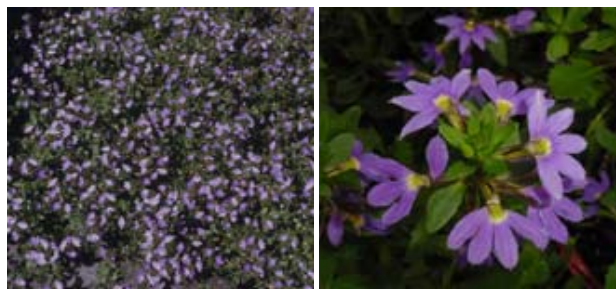
Recorded flying in all months of the year, but more commonly seen during the warmer months.

**Threats**

There are no known major threats to the Meadow Argus

Conservation

The Meadow Argus is common and widespread and requires no action at this stage.



Host plant photos: *Scaevola albida* (fan flower) J.Holliday; *Scaevola aemula* (closeup of fairy fan flower); *Portulaca oleracea* (munyeroo, purslane or pigweed) R.Grund; *Goodenia geniculata* J.Hunter.

ACKNOWLEDGEMENTS *Lucia limbaria* fact sheet:

Majority of text, map and flight bar from: 'Butterflies of South Australia' website by Roger Grund.

Other references and contributors include: Michael Moore; Fisher RH 1978 *Butterflies of South Australia*; Braby MF 2004 *The complete field guide to Butterflies of Australia*; Dashorst RM & Jessop JP 'Plants of the Adelaide Plains & Hills'.

Production: Jan Forrest OAM, July 2012.

BUTTERFLY CONSERVATION SA Inc.

is a not-for-profit organisation for those interested in conserving the habitat of Lepidoptera (butterflies and moths) and other animals.

For further information or to purchase our book 'Attracting Butterflies to your Garden, what to grow and conserve in the Adelaide region' or to purchase a 'Butterfly Garden' DVD contact the Secretary, c/- South Australian Museum, North Terrace, ADELAIDE 5000.

WEBSITE: www.butterflygardening.net.au

EMAIL: info@butterflygardening.net.au

REDISCOVERY OF THE DESERT SAND-SKIPPER *Croitana aestiva* Edwards

A recent paper by Christopher M Palmer and Michael F Braby in the Australian journal of Entomology (2012) 51, 47-59 provides information on the life history and behaviour of this elusive Australian butterfly.

The **Abstract** of this paper provides the following information:

Known previously from a total of eight specimens collected in 1966 and 1972 in the MacDonnell Ranges west of Alice Springs this species has now been rediscovered through targeted surveys. Subsequent biological studies were conducted from 2007 to 2010 and a reappraisal of the adult morphology show that four character states are unique to *C. aestiva*.

The eggs are creamy-white and subcircular with 21-19 longitudinal ribs. First instar larvae are creamy white, with a dark head capsule and prothoracic plate. Fourth and fifth instar larvae have a dark green medial band, a pale lateral band on each side of the body and a distinct, highly setose, brown anal plate. The pupa are mainly orange-brown, darkened anteriorly, with a highly sculptured pupal cap.

The larval food plant is the grass *Neurachne tenuifolia* (Poaceae) which is also endemic to central Australia. Shelters for all larvae and the pupa are among the leaf sheaths and stems near the base of the tussock.

Adults are opportunistic feeders on a wide variety of nectar-producing plants and are active throughout the day. Males use patrolling and perching behaviour to locate receptive females at a range of encounter sites, including the larval food plant and hilltops. Oviposition occurs during late morning and eggs are laid on the upper surface of blades of the food plant.

Comparison of the immature stages of *C. aestiva* with its congeners indicates many similarities in general morphology, but there are pronounced behavioural differences such as upward-orientated shelters.



Desert Sand Skipper
Plate scanned from page 83 The complete field guide to Butterflies of Australia by Michael F. Braby, CSIRO Publishing 2004.

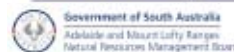
SA BUTTERFLY ID CHARTS

Congratulations to Steve Walker from NRM Education for producing these new A3 and A4 charts in conjunction with Butterfly Conservation SA committee members. Although the charts have been designed to primarily be used by school children and their teachers to assist in the easy identification of SA butterflies they will also be useful to everyone interested in identifying their local butterflies.

Photography is by members Roger Grund and Trevor Rowe. The charts are based on those on the SAMuseum website in the area entitled 'Butterfly Watch'.

Go to <http://www.nrmeducation.net.au/> then 'Engaging with nature' - 'Monitoring Activities' - 'Butterflies'. You may also like to check out the other charts on plants, birds, frogs, aquatic invertebrates etc.

Butterflies of the Adelaide Region



Above are the first of six A4 pages which depict a selection of local Adelaide butterflies based on colour and size. The butterflies are also presented in three A3 charts suitable for laminating and display.

SA URBAN FOREST PLANTING EVENTS

Planting events include

- 7 July Port Willunga Creek Aldinga
- 21 July Craighorn Farm
- 28 July Gawler buffer
- 29 July Belair National Park
- 29th July Tainmunda
- 29th July Semaphore dunes
- 4th August Onkaparinga River National Park
- 25th August Onkaparinga River Estuary

If you would like to become involved go to www.milliontrees.sa.gov.au for a full program

PUBLIC TALKS



We have had some fascinating talks recently, in particular Dr. Cath Kemper provided an insight into the collecting of whales for the SAMuseum, James Smith from FauNature talked about nest boxes (see photo below) and Dr. Iain Grierson demonstrated how managing the watering regime of vines is critical in producing our highest quality wines (see photo to the left).

Thanks go to Mike Moore and Roger Grund who have provided an overview of the 'Butterfly of the Month'.

Our next talk by Dr. Remko Leijds on native bees will provide an opportunity to learn more about these amazing insects including their fascinating life histories, and how we can help to preserve them.

Photos: Gerry Butler



MEMBERSHIP FEES ARE NOW DUE

If your fees are due you should receive a renewal notice in with this newsletter.

If you presently receive your newsletter posted (in black) then consider providing your email address to the secretary Jan Forrest janforrest@hotmail.com to have it sent electronically.

Posted copies may incur an additional cost in the future and electronic copies are in colour.

BUTTERFLY CONSERVATION SA Inc.

Chairman: David Keane dkeane@iweb.net.au

Secretary and Newsletter Editor: Jan Forrest OAM C/- South Australian Museum, North Terrace, ADELAIDE, 5000 ph H (08) 8297 8230.

email <jan.forrest@samuseum.sa.gov.au> or <jan_forrest@bigpond.com>

Treasurer: 5 Oakleigh Road, MARION. 5043 S.AUST.

OUTREACH PROGRAM

The full exhibition and AO size panels from the Exhibition "Where have all the Butterflies gone?" are available from Jan Forrest at the South Australian Museum for use by Landcare and other Conservation groups at seminars, conferences and workshops or just for display. Included are five introductory panels, and seventeen panels from seven habitat areas.

DIARY DATES

COMMITTEE MEETINGS - Meetings are normally held bi-monthly (usually the second Monday of the month) at 6.00pm at a committee members home. All members are welcome to attend. If you would like to attend please contact Secretary Jan Forrest.

ANNUAL GENERAL MEETING: 7th August 6.30 - 7.00.

PUBLIC TALKS PROGRAM: first Tuesday March - Nov., Clarence Park Community Centre 6.15pm for a 6.30pm start to 8.30pm.

Next talk: 7th August: "Native Bees" by Dr Remko Leijds at 7.00pm (after the AGM).

EXCURSION TO KANGARILLA: Saturday 22nd September at 11.00am

LAUNCH OF THE MOTH POSTER: Saturday 6th October at the Australian Plants Society plant sale and flower show at the Wayville showgrounds at 2.00pm

WEB SITES

"Butterfly Gardening" - www.butterflygardening.net.au

'Butterfly Conservation SA Inc.' <http://www.chariot.net.au/~bcsa/index.htm>

'South Australian Butterflies' (Roger Grund private site)

- <http://www.sabutterflies.org.au>

'Butterfly Watch' and 'Butterfly Challenge' - SAMuseum website

www.samuseum.sa.gov.au then click on 'Whats On' then 'online exhibitions'.

Teacher Resources (Jackie Miers) - http://www.teachers.ash.org.au/jmresources/butadelaide/Butterflies_of_Adelade.html

WELCOME TO NEW MEMBERS:

Mark Thomas
Michelle Denny
Tom Goodwit
Joseph Leeton
Elizabeth Moore
Lina Williams
Linda Builth
Anne Welsh
Sue Broadsheet
Helen Pryor
Charles and Margaret Cornwall
Alan Wilson
Susan Rohrsheim
Eileen Gunther
Elizabeth Yeatman
Meningie Area School
Heather Holden

DON'T FORGET:

**AGM on Tuesday
7th August at 6.30pm
followed by the
public talk on native bees
at 7.00pm**

