



## BUTTERFLY CONSERVATION SA INC.

# NEWSLETTER

No. 50: December, 2013

### PORT STANVAC - Our next shore thing

An article in 'Adelaide Now' September last year raised possible options for uses of the Port Stanvac site. They included: Marina Development, Housing, Industrial Land, Recreational Vehicle Park, Commodities Port, Nature Reserve, University Campus, Water Park and Airport. It also considered the pros and cons of saving the jetty.

In 1995 life member Roger Grund undertook a survey of the remnant vegetation on the former Port Stanvac site as follows:

**LOCATION:** Port Stanvac Oil Refinery, Coastal Reserve.

**DATE & LENGTH OF SURVEY:** 20 December 1995. 3 hrs

**AREA:** 17 hec.

**VEGETATION DOMAIN:** Coastal, limestone-heath.

**DOMINANT VEGETATION:** Low coastal-heath.

**CONDITION:** A remnant of the Adelaide, coastal limestone-heath system, contained within the fenced off grounds of the Port Stanvac Oil Refinery. The heath exists as a narrow remnant along the coastal cliff front, and does not extend landward due to historic clearing. The vegetation deteriorates at the northern end of the site, and there has been some dumping of rubbish by the Stanvac company. There have been some small token efforts at revegetation, mainly to saltbush and Acacia.

The heath community includes *Acacia cupularis*, \*\**A. cyclops*, *A. ligulata*, \*\**A. saligna*, *A. spinescens*, *Acrotriche patula*, *Alyxia buxifolia*, *Aristida behriana*, \**Gomphocarpus rotundifolia*, *Atriplex cinerea*, *A. paludosa cordata*, *A. semibaccata*, *Austrofestuca littoralis*, *Beyeria lechenaultii*, *Blennospora drummondii*, \**Cakile maritima*, *Calytrix tetragona*, *Carpobrotus rossii*, *Cassytha glabella dispar*, *Chloris truncata*, *Chrysocephalum apiculatum*, *Comesperma volubile*, *Convolvulus erubescens*, *Crassula decumbens*, \**Cynara cardunculus*, *Dampiera rosmarinifolia*, *Danthonia* spp incl. *D. caespitosa*, *Dianella revoluta*, *Disphyma crassifolium*, *Dissocarpus biflorus*, *Dodonaea hexandra*, *D. viscosa spatulata*, \**Echium plantagineum*, *Enchylaena tomentosa*, *Eucalyptus porosa*, \**Euphorbia paralias*, \**E. terracina*, *Euphrasia collina osbornii*, *Eutaxia microphylla diffusa*, *E.m. microphylla*, *Gahnia lanigera*, \**Galenia pubescens*, *Glycine clandestina sericea*, \**Glycyrrhiza glabra*, *Gonocarpus mezianus*, *Goodenia albiflora*, *G. amplexans*, *G. pinnatifida*, *Grevillea lavandulacea*, *Hakea rugosa*, *Hardenbergia violacea*, *Helichrysum leucopsidium*, *Hibbertia riparia*, *Isolepis nodosa*, *Kennedia prostrata*, *Kunzea pomifera*, \**Lagurus ovatus*, *Lawrenzia squamata*, *Lepidosperma concavum*, *L. congestum*, *Leptorhynchus squamatus*, *Leucophyta brownii*, *Lomandra collina* (very common), *L. densiflora*, *L. effusa*, *L. micrantha*, *Lotus australis*, \**Lycium ferocissimum*, *Maireana brevifolia*, *M. enchylaenoides*, \**Marubium vulgare*, *Melaleuca lanceolata*,

\* plant is an overseas introduction.

\*\*plant is an interstate introduction.



Coastal limestone-heath system, contained within the fenced off grounds of the Port Stanvac Oil Refinery. Photo: R.Grund

### IN THIS ISSUE

- Port Stanvac
- Friends of Parks Forum KI
- Tennyson Dunes
- Waite Conservation Reserve
- LeFevre Primary School Butterfly Garden
- New logo Friends of Parks
- Saline ground water dependant ecosystems
- Pam's garden at Clare
- Images for moth book
- The Cabbage Butterfly
- DEWNR Notices
- Public Talks program 2014
- Profile - Gil Hollamby
- International conference
- Books for sale?
- What's for sale?
- Notes
- Diary Dates

BUTTERFLY CONSERVATION SA. INC. Membership enquiries: [info@butterflygardening.net.au](mailto:info@butterflygardening.net.au)  
 Membership payments (\$10pa): Treasurer: C/- South Australian Museum, North Terrace, ADELAIDE. 5000  
 Cheques to be made out to Butterfly Conservation SA Inc.  
 Direct Debit details: BSB 805-022 Account No: 02247994 Account Name: Butterfly Conservation SA Inc.  
 Please email treasurer if paying by direct debit: [mima@esc.net.au](mailto:mima@esc.net.au)

Port Stanvac - continued from page 1.

*\*Mesembryanthemum crystallinum*, *Minuria leptophylla*, *Muehlenbeckia gunnii*, *Myoporum insulare*, *M. parvifolium*, *Nitraria billardierei*, *\*Olea europaea*, *Olearia axillaris*, *O. ramulosa*, *Opercularia turpis*, *Oxalis perennans*, *Paspalidium constrictum*, *\*Pennisetum villosum*, *Pimelea curviflora gracilis*, *P. serpyllifolia*, *Pittosporum phylliraeoides microcarpa*, *\*Plantago lanceolata*, *Poa poiformis*, *Pogonolepis muelleriana*, *Pomaderris paniculosa paniculosa*, *\*Rapistrum rugosum*, *Rhagodia candolleana*, *Salsola kali*, *Santalum acuminatum*, *\*Scabiosa atropurpurea*, *Scaevola crassifolia*, *S. linearis confertifolia*, *Sclerolaena diacantha*, *Senecio laetus*, *Spinifex sericeus*, *Sporobolus virginicus*, *Austrostipa spp incl. S. drummondii*, *S. elegantissima*, *S. nitida*, *S. platychaeta*, *S. scabra*, *\*Tetragonia decumbens*, *Themeda triandra*, *Threlkeldia diffusa*, *Thysanotus patersonii*, *Tricoryne elatior*, *Velleia arguta*, *Vittadinia megacephala*, *Westringia rigida*, *Zygophyllum billardierei*.

#### RESIDENT FOODPLANTS FOR THREATENED & POTENTIALLY THREATENED BUTTERFLIES:

*Acacia* spp, *Cassitya glabella dispar*, *Eutaxia microphylla microphylla*, *Gahnia lanigera*, *Lomandra collina*, *L. densiflora*, *Oxalis perennans*, perennial grasses, *Plantago* spp, *Santalum acuminatum*, *Austrostipa scabra*, *Westringia rigida*.

#### PRIOR HISTORICAL BUTTERFLY RECORDINGS OF THREATENED & POTENTIALLY THREATENED SPP (LAST DATE OF RECORDING):

*Anisynta cynone gracilis* (1939), *Antipodia atralba* (1986), *Candalides acastus* (1970), *Candalides heathi heathi* (1972), *Candalides hyacinthinus simplex* (~1890), *Delias aganippe* (1971), *Hypochrysops ignitus ignitus* (1973), *Jalmenus icilius* (1954), *Jalmenus lithochroa* (1959), *Lucia limbaria* (1968), *Motasingha trimaculata trimaculata* (1973), *Neolucia agricola agricola* (1954), *Ogyris amaryllis meridionalis* (1973), *Ogyris genoveva genue* (1936), *Ogyris idmo halmaturia* (~1890), *Ogyris olane ocala* (1968), *Ogyris otales* (~1890), *Theclinessthes albocincta* (1938), *Theclinessthes miskini miskini* (1971), *Trapezites luteus luteus* (1941), *Trapezites sciron eremicola* (no previous record).

**ACTUAL BUTTERFLY POPULATION:** *Antipodia atralba* is present on the *Gahnia lanigera* in all parts of the park, and the common species *Danaus petilia*, *Danaus plexippus plexippus* and *Ocybadistes walkeri hypochlorus*.

#### ADDITIONAL LIKELY RESIDENT BUTTERFLY

**POPULATION:** *Anisynta cynone gracilis*, *Candalides acastus*, common spp, *Neolucia agricola agricola* and possibly *Candalides heathi heathi*, *Delias aganippe*, *Lucia limbaria* and *Theclinessthes miskini miskini*.

**SUMMARY:** This is **probably the most significant remnant of coastal heath still remaining south of Adelaide**, closely followed by the Marino and Hallett Cove Conservation Parks. It has no public usage, but does suffer from the occasional indiscriminate use by the Stanvac company. The site needs to remain out of bounds to company personnel for indiscriminate use, and the deposited rubbish should be removed. It is the single most important site for the conservation of the rare skipper-butterfly *Antipodia atralba* in the Adelaide region. The top part of the cliff zone could support further indigenous foodplants not listed above, suitable for rare and threatened butterflies. The most suitable, which would survive the bleak site, are *Acacia victoriae* and *Melaleuca lanceolata*. The *Melaleuca*, once it was established, could be seeded with the mistletoe *Amyema melaleucae*. Along the back part of the sandy foreshore areas, particularly the southern area, *Adriana klotzschii* could be planted. This site would have to be repopulated with the threatened butterfly species. Due to the common occurrence of *Lomandra collina* it could be a good site for the establishment of the vulnerable skipper-butterfly *Trapezites sciron*.

**CONSERVATION STATUS:** Private Land and Coastal Reserve. The private site should be Heritage Listed, even though it is likely to remain in a conservation mode while the Stanvac company is in possession.  
Surveyor: R. Grund

Members of the BCSA committee are keen to work with relevant government and non-government agencies who may be interested in establishing the area of remnant vegetation identified by Roger Grund as significant for the protection of plants and animals.

We seek expressions of interest from BCSA members who may be interested in being involved in this project. Please contact Chairman Jan Forrest if you would like to become involved.

### FRIENDS OF PARKS FORUM, 2014 KANGAROO ISLAND 10-12 May, 2014

For all Friends of Parks Forum on Kangaroo Island information, please contact Catherine Chaplin on catherine.chaplin2@sa.gov.au, telephone 08 8553 4444 or fax 08 8553 2531 or visit <http://www.communitywebs.org/FriendsofParks/>

**Registration for the Friends of Parks Forum** on Kangaroo Island is separate from the bookings for the Forum Field Trips you MUST book for both the Forum Registration and a Forum Field Trip.  
Forum costs: registration \$50\* \$80, Sat dinner \$25\* \$30, Sun BBQ \$20\* \$25, T-shirt \$20\* n/a. \*early bird rates until 1 Mar. 2014. Application forms, accommodation, transport and field trip information available from Chairman Jan Forrest.

To book a **Forum Field Trip**, please contact Sealink on telephone 08 8202 8649 or email [groups@sealink.com.au](mailto:groups@sealink.com.au) and quote 29FO-RUMKI14. Sealink are coordinating all the Forum Field Trip bookings on behalf of the Committee. Delegates must arrive at the Kangaroo Island Community Education Performing Arts Centre at 8:30am on Sunday 11 May 2014. Each field trip includes lunch, morning and afternoon tea. Please bring appropriate outdoor clothing to cater for the weather on the day. Each field trip concludes at the Kangaroo Island Community Education Performing Arts Centre at 5:00pm on Sunday 11 May 2014.

#### Forum Field Trip Cost

- Early Bird Rate- \$70 per person (booking received prior to 1 March 2014)
- Normal Rate- \$90 per person (booking received after 1 March 2014)



## TENNYSON DUNES

BCSA committee members have been assisting the Friends of Tennyson Dunes with content and images for interpretive signs. In particular, to promote the conservation of the Bitter-bush blue butterfly *Theclinessthes albocincta* and the caterpillar host plant *Adriana quadripartita* (form *klotzschii*).



Interpretive sign located in front of the hostplant. Walkways and dunes. Photos: Jan Forrest



## FRIENDS OF TENNYSON DUNES

The dunes are located adjacent to Military Road, Tennyson Bus stop 32A. The Friends website and facebook pages contain many fantastic images and on the website [www.tennyson.org.au](http://www.tennyson.org.au) has an interpretive trail (see map right) which provides great information on the different plants you will encounter.

Various events are promoted on the website so it is good idea to put it in your favourites so you do not miss out.



Website cover photo, interpretive trail map.



## WAITE CONSERVATION RESERVE

### Waite Conservation Reserve Loop Walk.

Experience one of the best surviving Grey Box woodlands near Adelaide and its community of plants and animals set against breathtaking views over the city.

The walk is grade 3 with one steep rocky section and uneven ground. It is 4 km. Wear good walking shoes, appropriate clothing, hat and sunscreen.

Directions: Take Waite Road, Urrbrae, off Cross Road. Turn left into Hartley Grove at the roundabout & follow to the entrance gate at the eastern end. There are car parks along the way if needed.

### Walking trail guide

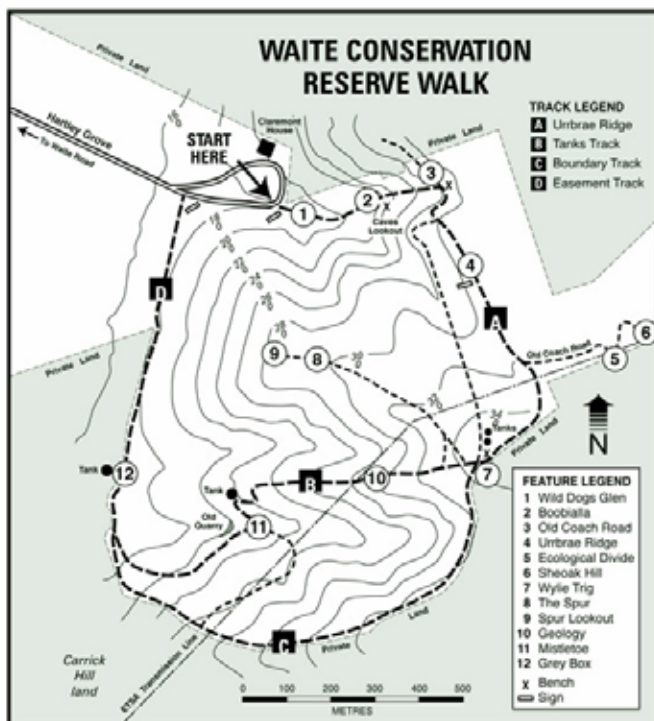
There are two marked trails through the Waite Reserve.

One starts at the bottom of Wild Dogs Glen and does a loop back to the Easement. The trail starts with a steep climb. Allow 2 hours.

Part of the Yurrebilla Trail also traverses the Waite Conservation Reserve. This crosses our southern boundary from Carrick Hill and continues on a public walking track through Springwood Park to the old Mt Barker Road, below Eagle on the Hill. This trail is a narrow footpad, no steeper than 1:11 grade. Allow 45 minutes.

Both walking tracks afford magnificent views over the Adelaide Plains to the sea.

For further information go to the Waite Conservation Reserve website. [www.adelaide.edu.au/reserve/](http://www.adelaide.edu.au/reserve/)



### SUGGESTED NEW LOGO FOR FRIENDS OF PARKS

Here is a copy of the suggested new logo for Friends of Parks. Should you wish to speak with someone about this contact Chairman of Friends of Parks David Mitchell or Ian Radbone (Volunteers and Partnership Unit), or email comments or questions to [dm\\_mitchell@bigpond.com](mailto:dm_mitchell@bigpond.com).



## LE FEVRE PRIMARY SCHOOL BUTTERFLY GARDEN



The Chairman Jan Forrest recently visited LeFevre Primary School to talk to children involved in the creation of a butterfly garden in their school grounds.

Plants have been sourced from a local nursery and include a wide range of local providence host and nectar plants.

Jan presented the students with a Butterfly Site sign and was given a tour of this special place. As the plants grow this will be a wonderful haven for not only insects but also lizards and birds.



*Editors Note: Congratulations to all involved in this project. If you have images to share of your butterfly garden please send them to the Editor.*

## SALINE GROUND WATER DEPENDANT ECOSYSTEMS

At our public talks program on 1st October Peri Coleman provided a fascinating insight into Saline ground water dependant ecosystems, in particular the coastal sabkhas and dolines found on Eyre Peninsula.

If you are interested in seeing this presentation on line click on the following link <http://www.slideshare.net/naturescope/west-coast-gde>. Don't forget to listen to the audio as you watch the slide show!

Our thanks to Dan and Emma Monceaux for filming this presentation.



## PAM'S GARDEN AT CLARE

Our garden in Clare is quite large (0.75 hectares) and is planted predominantly with natives, the exceptions being a cedar, a fir, and a carob hedge (all approximately 100 years old) as well as our fruit trees and vegetables.

We have tried to plant a mixture of genera to encourage birds, butterflies and other insects. The garden is arranged to have open spaces as well as layers of tall trees, medium and small shrubs, grasses and lilies. In spring we have the main flowering season, including many self-seeded *Bulbine semibarbata*, providing food for lots of insects. There is another flush in autumn. Although these are the main times for flowering there is always something in flower in the garden. We have included Sennas, Acacias, Saltbushes and grasses in our attempts to attract butterflies. There are also patches of *Frankenia pauciflora* and much *Oxalis corniculata*. The small butterflies really enjoy feeding on these, most abundant being Common Grass-blues.

In February 2011 we were lucky enough to see Chequered Coppers, mostly flying very low over the grassy areas and basking on the pathways. Three more visited in early October 2013, behaving in a similar fashion. That day was a particularly good butterfly day, warm and calm, when we had good sightings of the Chequered Copper, Common Grass-blue, Saltbush blue, Two-spotted Line-blue, Meadow Argus, Australian Painted Lady, Small Grass-yellow, and of course, a Cabbage White. Also seen at other times have been White-banded Grass-dart, Dainty and Chequered Swallowtails, Common Brown, Yellow Admiral, Lesser Wanderer, Caper White, Spotted Jezebel and Monarch.

While we obviously have many 'butterfly free' days it gives us much pleasure when they do visit.

Pam O'Malley (BCSA member)



Photos: Pam O'Mallee

*Editor Note: thanks Pam for your article, great to hear about your garden and I am hopeful that other members will share their experiences, please send articles to Editor, Butterfly conservation newsletter editor C/- SAMuseum.*

## CAN YOU HELP PROVIDE IMAGES OF CATERPILLARS AND MOTHS FOR OUR NEW BOOK?

Our next project is the production of a moth book to replace the now out of print "A field guide to common moths of the Adelaide region" and a companion to our butterfly gardening book.

We have received a 'seeding grant' from the AMLNRM and a small team are working with author Peter McQuillan on content.

Around 80 common moths have been chosen and we would like to include images of not only the adults but

their caterpillars as well. **This is where we need help from members.**

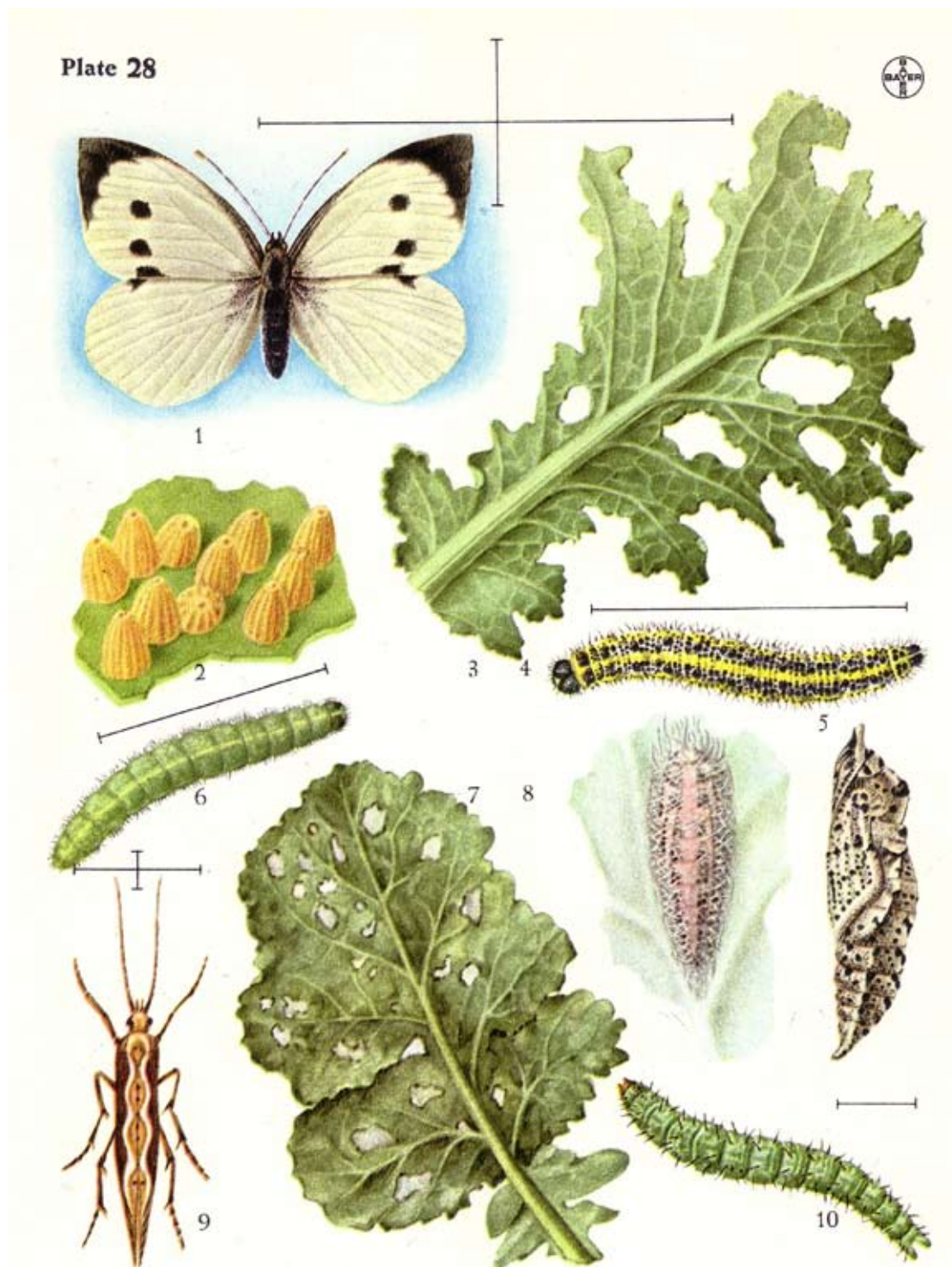
If you can provide high quality images of local moths and caterpillars please email them direct to David Keane on [dkeane@iweb.net.au](mailto:dkeane@iweb.net.au) or on CD to D. Keane C/- Post Office, Inglewood SA 5133. Include information on location, date, identification (if possible), habitat and any other information. All images used in the book will be acknowledged. Please include your name in the title of the image.



**THE CABBAGE BUTTERFLY**

David Keane

People are often get confused when they hear the name 'cabbage butterfly', it can be confusing! 'cabbage' is used for both butterfly and moth, but generally gardeners refer to the butterfly as the main culprit. Both lepidopterans can be destructive of the cabbage family of plants, the Brassicaceae (Cruciferae). The Cabbage White butterfly was introduced into Australia from New Zealand.



*Pieris* spp.

1) *P. brassicae*, female 2) egg pod of *P. brassicae*, magnified. 3) Cabbage leaf damaged by feeding 4) caterpillar of *P. brassicae* 5) pupa of *P. brassicae* 6) caterpillar of *P. rapae*

\**Plutella maculipennis*

7) holes eaten out in a cabbage leaf 8) cocoon 9) *P. maculipennis* 10) caterpillar, Illustrations 8 - 10 magnified.

Ref: Bayer Pflanzenschutz Compendium two, 1968.

\* the *Plutella* genus in Australia is presently under review.

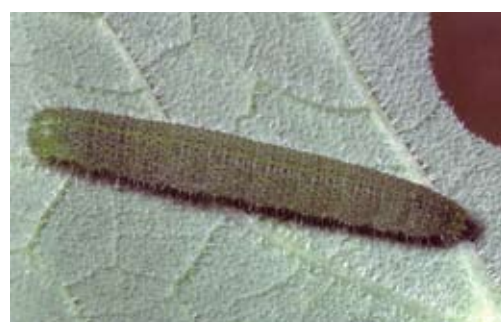
Continued from page 6.

The insects that are also known as 'cabbage moths' include *Mamestra brassicae* which is a common European moth of the family Noctuidae and *Chrysodeixis argentifera* the 'Diamond back cabbage moth' found in Australia.



Above: Diamond back cabbage moth  
Left: Cabbage moth

Other insects that relate to the name 'cabbage' are: Native budworm moth (*Helicoverpa punctigera*), Cabbage white butterfly (*Pieris rapae*), Cabbage-centre grub (*Hellula hydralis*), Vegetable looper (*Chrysodeixis argentifera*), Cabbage moth (*Plutella xylostella*) confusing! That's probably why gardeners alike just kill everything they think might be the pest.



Photos: Caterpillars of the Vegetable looper moth, Cabbage moth and Cabbage White butterfly.

## THE CABBAGE WHITE IN ADELAIDE GARDENS

The Small White (*Pieris rapae*) is a small to mid-sized butterfly species of the Yellows-and-Whites family Pieridae. It is also commonly known as the Small Cabbage White. The names "Cabbage Butterfly" and "Cabbage White" can also refer to the Large White.

The Small White is widespread across Europe, North Africa and Asia and has also been accidentally introduced to North America, Australia and New Zealand where they have become pests on cultivated cabbages and other mustard family crops.

The best known of the whites, it is often a pest in our vegetable gardens. Originally a Northern Hemisphere butterfly, it was first reported from Melbourne in 1929 and by about 1937 it had become well established. Over the next six years during the Second World War period, it had spread across much of non-tropical Australia. It is likely much of this rapid dispersal was facilitated by the war effort, with the cultivation of cabbages, cauliflowers and other cruciferous vegetables, and the subsequent widespread transportation of these vegetables containing the early stages of the butterfly.

It was first documented from South Australia in 1940, and within two years was quite widespread in the southern parts of the state. It is presently one of the most common butterflies in temperate South Australia, with its larvae adapting well to the extensive broad-acre cultivation of canola (*Brassica napus*) in agricultural areas. I wonder if the butterfly will also become genetically modified!

It is sometimes confused with the Caper White. See BCSA book: 'Attracting Butterflies to your Garden' What to Grow and Conserve in the Adelaide Region (Hunt, Grund, Keane, Forrest, 2007). Refer also to the South Australian Butterflies website by Roger Grund [www.sabutterflies.org.au/pier/rapae\\_ds.htm](http://www.sabutterflies.org.au/pier/rapae_ds.htm) and the book 'Butterflies of South Australia' (Robert H Fisher 1978) (plate 6).

Continued over



Continued from page 7



Cabbage White Butterfly

*Pieris rapae rapae* (male)*Pieris rapae rapae* (female)Ref: South Australian Butterflies [www.sabutterflies.org.au/pier/rapae\\_ds.htm](http://www.sabutterflies.org.au/pier/rapae_ds.htm). (R. Grund)

## METHODS OF CONTROL

The first port of call is to design your environment to be balanced so that chemicals can be avoided.

1) Companion planting: Is the preferred method of control advocated by Butterfly Conservation SA. This is a control method used for centuries and is the most environmental friendly way of keeping our planet safe for the future. Companion planting keeps the garden in balance and allows for wildlife to prosper without having particular impacts on specific instances. Tagetes, a common daisy, is often planted next to vegetable crops and this allows friend and foe survive in a minimalist way.

2) Use of insecticides: You can look up many books and references to find ways of controlling and eliminating pests and diseases. Controlling caterpillars in the past have been to use DDT, Lindane or derris dust but these are extremely dangerous to health and the environment. Today with more modern thinking we use other chemicals and methods but with more friendly to the environment, in some cases!. The present day recommends many controls for caterpillars and insects which are readily available in hardware stores. Dipel is one, a product of Yates, which is a fairly harmless bio-insecticide based on a naturally occurring bacteria, *Bacillus thuringiensis* that is deadly to caterpillars but harmless to humans. There are also similar products out there but read the label first.

Crucifer vegies	Companion Plants to use	Remarks
Brassica's Cabbage, Cauliflower, Broccoli	Aromatic plants, sage, dill, camomile, beets, peppermint, rosemary, Beans, Celery, On- ions, Potatoes, dwarf zinnias.	Dill attracts a wasp to control cabbage moth. Zinnias attract lady bugs to protect plants, the bugs eat thrips.

**The control of insects in the garden is not about eliminating the ones you do not like or appear to be damaging your vegies, it's about thinking more about a 'balanced habitat'.**

**To cater for all wildlife we need to make places for them to survive yet getting what we want out of it. If we were to plant some nasturtiums down the back then we can provide a habitat or a larder for insects and animals to feed, away from your precious garden.**

## NOTICES FROM DEPARTMENT OF ENVIRONMENT

Please provide your email address to Chairman Jan Forrest if you wish to receive notices from DEWNR, these often include invitations to open days and information from Friends of Parks groups and other organisations.



Photo: E.Steele-Collins Cabbage White, Waitpinga



# Butterfly Conservation South Australia Inc.

presents

## a PUBLIC TALKS PROGRAM 2014

### 2014 PROGRAM OF SPEAKERS

**Butterfly Conservation  
South Australia Inc.**

presents

## a PUBLIC TALKS PROGRAM

On the first Tuesday of the month March to  
November at 6.15pm for a prompt 6.30pm start.

At the Clarence Park Community Centre  
72-74 East Avenue, Black Forest.

Bus route W91/W90: stop 10.

Noarlunga Train service: Clarence Park Station.

Glenelg Tram: Forestville stop 4, 9min walk south.

Entry by donation (minimum of \$2).

Please bring supper to share, tea/coffee will be supplied.

Meetings should conclude by 8.30pm.

At the start of each meeting a ten minute  
presentation on a 'Butterfly of the Month'  
will be given by a BCSSA committee member.

Photo Robert H Fisher: Wood White *Delias aganippe*

www.butterflygardening.net.au

### PROFILE - COMMITTEE MEMBER GIL HOLLAMBY

I was first introduced to natural history by my grade 3 teacher and almost immediately started an insect collection. I took an Agricultural Science degree at Adelaide University because there were subjects in Entomology.

At university I was exposed to and became interested in genetics and on graduating followed this interest into a wheat breeding position at Roseworthy Agricultural College.

In the early years at Roseworthy I also lectured to diploma students in biology and applied entomology but plant breeding took up more and more time so that my interest in insects became just a hobby and had to compete with my other hobbies orienteering, snorkelling, fishing, gardening and wood turning – all of which wax and wane over time.

Since retirement I have been a regular volunteer crew on SA's tall ship 'One and All'.

Hopefully I can be of some help on the committee of BCSSA, it will restimulate my activities in natural history.

I currently live in Williamstown.



#### 4th March: "Our Outer Harbor Pelicans"

Conservation Ecologist Dr. Greg Johnston will provide a fascinating insight into the bizarre family life of pelicans and how research and community involvement is helping to conserve these wonderful birds in the Outer Harbor area.

#### 1st April: "Moths - stories from the past"

Dr. Peter McQuillan from the University of Tasmania will provide stories on the eccentricities of past moth collectors and entomologists whose collections and research have provided baseline information now used in present-day research.

#### 6th May: "The secret lives of sea anemones"

Not just simple flowers of the sea, this talk will give you an insight into the lives of sea anemones. Some species can swim, mimic other objects, form symbioses with other organisms or are fatally toxic! Presented by Dr. Andrea Crowther from the SAMuseum.

#### 3th June: "A Revegetation blueprint"

Member David Keane will draw on 40 years experience rehabilitating mine sites and quarries to outline ecological principles necessary for a successful vegetation rehabilitation outcome. This talk will be of interest to all involved in revegetation projects.

#### 1st July: "Jewel beetles and plants"

Dr Peter Lang is a botanist with the State Herbarium, but also has an interest in Buprestid or Jewel beetles and their association with plants. Visitors will be enthralled by Peter's amazing images of these colourful beetles.

#### 5th Aug "The wild life of wildlife - procreation oddities"

The need to breed has created many opportunities for evolution to enhance sexual "apparatus" and behaviour in the animal kingdom. Join us for a brief tour of the bizarre kinds of equipment and rituals that have led to the marvellous array of biological diversity on the planet. This talk by Professor Steve Donnellan will commence at 7.00pm following a short BCSSA AGM at 6.30pm.

#### 2nd Sept: to be advised

This talk will be preceded by the "Launch of the new BCSSA Spider and other Arachnids posters".

#### 7th Oct: "Weeds and wildlife"

We know that wildlife sometimes use weeds as habitat – but does it really matter? Jasmin Packer, University of Adelaide, will reveal why weeds are sometimes critical habitat.

#### 4th Nov: to be advised

In the case of an advertised speaker not being available, a speaker of similar interest will replace that advertised.

### INTERNATIONAL CONFERENCE ON AFROTROPICAL LEPIDOPTERA

6th - 9th March, 2014. Registration closes 31st January, 2014 Kwalata Lodge, Dinokeng Nature Reserve, Pretoria, South Africa. Application form and further information on accommodation, costs and tours from Chairman Jan Forrest.

### BOOKS FOR SALE

**Butterflies of Australia and New Guinea**, Charles Barrett and ANBurns 1951 1st ed. hard back \$15

**Common Malayan Butterflies**, R.Morrell 1960 (has magnificent images). \$15

Contact: Michael Tyler PO Box 334, BELAIR 5052

## WHAT'S FOR SALE?

**BOOKS** *"Attracting butterflies to your garden, what to grow and conserve in the Adelaide Region"* Published by BCSA 2007  
- Our price \$25 (members may purchase one book for \$20). Postage \$5.

*"the Making of a Monarch"* Published Linda Shmith 2013 - BCSA members price \$20 plus postage \$5..

**DVD** *"Butterfly Garden"* produced by Tracy Baron and Carolyn Herbert - BCSA members price \$15, postage and packaging \$5.  
One book plus one DVD postage \$10.

**POSTERS** *"Common Moths of the Adelaide Region"* Published by BCSA 2012 - set of two \$10 plus postage \$10. (available FREE to schools - all they need pay is postage costs, contact Secretary for an order form).

**SITE SIGNS:** Application form to register a butterfly site available on the butterfly gardening website. Cost of sign including postage is \$50.

**POLO-SHIRTS** with Butterfly Conservation logo. Prices between \$35 and \$40. Includes postage. A wide range of colours are available.



If you would like to order any of our merchandise or would like an order form for a site sign, polo-shirt or schools poster set, please email: [info@butterflygardening.net.au](mailto:info@butterflygardening.net.au) or write to the Secretary C/- SAMuseum, North Terrace, ADELAIDE. 5000.

## NOTES:

Please note that the **Friends of Anstey Hill Recreation Park** now have a new facebook page, and they have invited you to have a look: <https://www.facebook.com/friendsofansteyhill>

**Volunteer Opportunity** - Reintroduction of the Western Quoll, Wilpena Pound, Flinders Ranges 24th March - 24th June, 2014. Funds available for accommodation, food and transport costs. Applications close 31 Jan. 2014 to [robert.brandle@sa.gov.au](mailto:robert.brandle@sa.gov.au).

## FOR SALE

2 Genuine Akubra hats  
**Mens** 'Stockman' size 56  
**Ladies** 'Down Under' size 53  
Contact: Editor Jan Forrest  
82978230

## BUTTERFLY CONSERVATION SA Inc.

C/- South Australian Museum, North Terrace, ADELAIDE, 5000

Email: [info@butterflygardening.net.au](mailto:info@butterflygardening.net.au)

Chairman and Newsletter editor: Jan Forrest OAM, ph H (08) 8297 8230.

email <[janforrest@hotmail.com](mailto:janforrest@hotmail.com)> or <[jan\\_forrest@bigpond.com](mailto:jan_forrest@bigpond.com)>

Secretary: vacant

Treasurer : Mike Moore, 5 Oakleigh Road, MARION. 5043 S.AUST.

Committee: Andrew Lines (Minutes), John Wilson (Membership); Gerry Butler (Publications Project Manager), Jill Davy, David Keane, Gil Hollamby, Lorraine Woodcock and Bryan Harwood.

Consultants: Roger Grund and Peter McQuillan

Public Officer: Beth Keane

## DIARY DATES

**COMMITTEE MEETINGS** - Meetings are normally held bi-monthly (usually the second Monday of the month) at 6.00pm at a committee members home. All members are welcome to attend. If you would like to attend please contact Chairman, Jan Forrest.

**PUBLIC TALKS PROGRAM 2014:** first Tuesday March - November, Clarence Park Community Centre 6.15pm for a 6.30pm start to 8.30pm.

**Next talk: 4th March: "Our Outer Harbor Pelicans"**

Conservation Ecologist Dr. Greg Johnston will provide a fascinating insight into the bizarre family life of pelicans and how research and community involvement is helping to conserve these wonderful birds in the Outer Harbor area.

## WEB SITES

**"Butterfly Gardening"** - [www.butterflygardening.net.au](http://www.butterflygardening.net.au)

'Butterfly Conservation SA Inc.' <http://www.chariot.net.au/~bcsa/index.htm>

'South Australian Butterflies' (RGrund private site) - <http://www.sabutterflies.org.au>

'Butterfly Watch' and **'Butterfly Challenge'** - presently unavailable

**Teacher Resources** (Jackie Miers) - [http://www.teachers.ash.org.au/jmresources/butadelaide/Butterflies\\_of\\_Adelaide.html](http://www.teachers.ash.org.au/jmresources/butadelaide/Butterflies_of_Adelaide.html)

NRM Education - [nrmeducation.net.au/](http://nrmeducation.net.au/) 'Engaging with nature' / 'Monitoring Activities' / 'Butterflies' (A3 identification charts of South Australian butterflies available)

## WELCOME TO NEW MEMBERS:

David Sloper  
Jeff Lang  
Pat Wundersitz  
Bernie Milburn  
Luise Gray  
Pamela Kelly  
Julie Turner  
Peter Lang  
Peter McQuillan  
Tony Chiles  
Elizabeth Grove Primary School  
Gary Goland  
LeFevre Primary School  
Annette Stewart

## THANKS TO OUR HELPERS

HOME SHOW AND	APS SHOW
GARDEN EXPO	Gerry Butler
Jill Davy	Sue Forrest
Linda Shmith	Lorraine Wood-
Andrew Lines	cock
Pat Wundersitz	Janet Subagio
Archie McArthur	
Jan Forrest	

