



BUTTERFLY CONSERVATION SA INC.

NEWSLETTER

No. 40: February 2011

SMALL COPPER

Lucia limbaria

By member Andrew Lines

Late in the autumn of 2009, I went to my letterbox and flying around my feet was a male copper butterfly. After a quick look, I discovered there were at least eight males and females flying around my front yard.

My front lawn and garden and half my back lawn have yellow wood sorrel *Oxalis perennans* growing in it. It is also growing in the neighbour's yard on either side.

By mid morning these small butterflies (male 26mm female 28mm) could be seen sunning themselves on the lawn and this is when they are easy to see because of the bright orange spots on the forewing of the male.

Their flight is rapid, but will only fly short distances before alighting in the ground or blade of grass, males will stake out a piece of territory and will often interact between rival males and common blues, chasing one another then returning back to the spot or somewhere close by. The females are less active.

By the afternoon activity slows and they appear to rest or perch on the ground or some other low vegetation for long periods of time and are very hard to see because of their size and the cryptic pattern on the underside of the wings which help to camouflage them.

One afternoon while photographing a female, a male flew up to her and after a quick aerial courtship they landed back on the ground about four to five centimetres apart, just in front of me. The male appeared to give a little "dance" while vibrating- fluttering his wings in short quick concession until he was along side her, then they came together and began to mate. The whole process took about four minutes.

The females lay their eggs on the underside of the leaf, but I have also observed them crawling under and through the food plant depositing eggs along the way.

This species also has a close relationship with *Iridomyrmex* spp. of ant. This is a small black ant that is commonly found around the Adelaide region and are the ones that come into your house and attack your sugar bowl! The ants are numerous in the areas where they are breeding and the larva's presence is often given away by the number of ants attending it.

A mature larva was seen on the food plant attended by many ants and when disturbed it soon retreated

IN THIS ISSUE

- Small Copper *Lucia limbaria*
- 2009-10 Audited Financial Statement
- Butterfly sites
- Public Talks Program
- Helena Gum Moth
- Polo shirt order form
- Wittunga Butterfly Garden
- Environmental agencies notes.
- Proposed excursion
- Butterfly Gardening DVD
- Site images and notes
- The 'Antarctic Terror' now lives at home
- APS show at wayville Oct.
- Gardening and Outdoor show - help required
- Diary notes
- New Members



Photos: Andrew Lions. Left Female Small Copper, Right mating pair.

continued page 5

BUTTERFLY CONSERVATION SA. INC. for membership enquiries and annual membership payments (\$10):
Treasurer: 5 Oakleigh Road, MARION. 5043 S.AUST.

2009-2010 AUDITED FINANCIAL STATEMENT

Moneysavers Account

Opening balance	\$11895.88
Income	\$ 542.97
Transferred from Everyday Account	\$ 4023.15
TOTAL	\$ 16462.00

CPS Bank Statement 30th June 2010 \$ 16462.00

Everyday Account

Opening balance	\$ 636.95
Income (minus Opening Balance)	\$ 8923.80
Subtotal	\$ 9560.75
Less Expenditure	\$ 2448.49
Subtotal	\$ 7112.26
Less Transferred into Moneysaver Account	\$ 4023.15
TOTAL	\$ 3089.11

CPS Bank Statement 30th June 2010 \$ 3089.11

Auditor's Report

I have examined the accounts and records of the Butterfly Conservation South Australia Inc. (BCSA Inc.)

In my opinion the attached statements of Income and Expenditure for each of the

- Everyday Account
- Moneysavers Account

represent true summaries of the transactions for the period to 30/06/2010.

I certify that the closing balances are reconciled with balance of the Bank Statements.


K. Fieggo
AASA, FCIS

**Summary of Income - EVERYDAY ACCOUNT**

Opening balance	636.95
Badges	10.00
Membership/book deal	635.00
Membership fees	2105.55
Postage misc.	25.85
Book sales	4536.56
Calendar sales (cliff-top creations)	118.00
Card sales (cliff-top creations)	38.50
Newsletters	52.00
CD	22.00
CPS Interest	.69
Donations	577.00
Data projector hire	20.00
miscellaneous	10.00
Signs	121.20
Cash held over	651.45
TOTAL	\$9560.75

Summary of Expenditure - EVERYDAY A/C

Equipment: briefcase	103.50
Data projector globe	476.00
Display costs / printing	79.80
Stall	30.00
Memberships: Friends of Parks	15.00
Monarch Trust	25.00
Operations: AGM	125.00
Newsletter Printing	352.00
Newsletter postage 2	154.00
Newsletter Postage	407.65
Book Postage	45.92
Stationery	216.45
CD Postage	8.90
Sales: Calendars	120.00
CPS: bank fee	8.50
Website	264.00
Other	16.77
TOTAL	\$2448.49

WE NOW HAVE 52 REGISTERED BUTTERFLY GARDENING SITES

BCSA now has 52 registered butterfly gardening sites, this is very encouraging as it shows that the community is taking up the challenge to provide habitat not only for butterflies and their caterpillars but also other animals.

Sites include schools and community areas as well as private gardens. If you have a registered site please send us some images and information on your site including the challenges you encountered in setting up your garden. We would love to hear from you.

Photo: RAGreen Butterfly garden site #49 at Brinkworth

Butterfly Conservation South Australia Inc.

presents

a PUBLIC TALKS PROGRAM

On the first Tuesday of the month March to
November at 6.15pm for a prompt 6.30pm start.

At the Clarence Park Community Centre

72-74 East Avenue, Black Forest.

Bus route W91/W90: stop 10.

Noarlunga Train service: Clarence Park Station

Glenelg Tram: Forestville stop 4, 9min walk south.

Entry by donation (minimum of \$2).

Please bring supper to share, tea/coffee will be supplied.

Meetings should conclude by 8.30pm.

At the start of each meeting a ten minute
presentation on a 'Butterfly of the Month'
will be given by a BCSA committee member.

Photo Mike Gemmell: Australian Admiral *Vanessa itea*

BUTTERFLY CONSERVATION SA INC.

c/- South Australian Museum, North Terrace, ADELAIDE

Further Information Secretary: Jan Forrest 8297 8230

Membership is \$10pa

Websites:

Butterfly Gardening - www.butterflygardening.net.au

BCSA - www.chariot.net.au/~bcsa/index.htm

Resources for sale:

Our book 'Attracting butterflies to your garden, what to grow
and conserve in the Adelaide region' is available from the
secretary. RRP \$29.95 (at the talks program - \$25ea).

A 'Butterfly Gardening' DVD will also be available.



PUBLIC TALKS PROGRAM 2011

1st March: "Birds of Prey" Nicholas Birks, wildlife photographer has spent 50 years observing birds of prey. His talk will provide a rare insight into the habits of these magnificent animals.

5th April: "Geckos old and new" The South Australian reptile fauna is abundant, Museum researcher Dr. Mark Hutchinson will provide a fascinating look into the world of geckos.

3rd May: "Spiders in your Garden" Be prepared to be amazed as arachnologist and photographer David Hirst provides an overview of the common and less common animals to be found in your garden and elsewhere.

7th June: "Invertebrates of Antarctica" A fascinating look into the world of small invertebrates that cling to life in a remote and desolate place, presented by Museum researcher Dr. Mark Stevens.

5th July: "Native Grasses - an overview" Grasses are an important food plant for the caterpillars of several butterfly species, they also look good in your garden. Presented by member Robert Myers from the Native Grasses Association.

2nd Aug and AGM: "Life history of the Ogyris butterflies" Following a short BCSA AGM member Mike Moore will present the fascinating life history of this butterfly species. Many *Ogyris* caterpillars live with ants and this relationship has fascinated butterfly enthusiasts for decades.

6th Sept: "The paradox of the possum: possums in our lives in SA" Philip Roetman from the University of South Australia has researched how people interact with our native possums. An entertaining talk on the pros and cons of living with possums, and why our space is important habitat for this local wildlife.

4th Oct: "Life on salt lakes" South Australia has many salt lakes and Museum Collection Manager Dr. Peter Hudson prowls every lake he encounters looking for the signs of the animals that live on and below the surface of the lake.

1st Nov: "Vertical Wall and Rooftop Gardening at the Adelaide Zoo" Horticulturists Jeff Lugg and Danielle Shallow are involved in the planning, design, construction, installation and maintenance of a special garden at the zoo - this fascinating talk will be of interest to all gardeners.

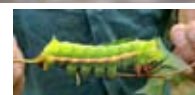
In this case of an advertised speaker not being available, a speaker of similar interest will replace that advertised.

HELENA GUM MOTH *Opodiphthera helena* FAMILY SATURNIIDAE similar to the interstate species known as the 'Emperor Gum Moth' *Opodiphthera eucalypti*.

Early instars of this Caterpillar are pale brown with double white lines along the back and sides, paired yellow spots on the back, yellow scoli along each side, and seven black tubercles ringed in red : three on the thorax and one on the tail. Later the ground colour becomes green, and they develop red tubercles on the thorax, and dark patches on the first and last abdominal segments. When they feel threatened, they curl the head under, exposing the spines on the thorax.

The final instar is green with a pale pink lateral stripe, red spiracular openings, and is covered in short white bristles. There are small paired spikes on the thorax and on the eighth abdominal segment.

The Caterpillar feeds in broad daylight on:
various species of Gum Trees (*Eucalyptus*).



Text: Don Herbison-Evans and Stella Crosby website '*Lepidoptera Larvae of Australia*' also caterpillar image.

Photos: Henny 1 Nov 2010. This moth was sheltering on a stringy bark, the weather cold and windy. location; Pages Flat, length from wing tip to tip, 135-140 mm

BCSA POLO SHIRT ORDER FORM

Orders are now being taken for a Polo Shirt with an embroidered Butterfly Conservation SA Logo.
You may choose any colour however light colours are preferred as the lettering is black.

Adults Pique Knit Polo, 65% Polyester 35% Cotton.
Top stitched armhole, Twin needle sleeves and hem
Loose pocket included (can sew on yourself) or pay additional \$3.50 for it to be sewn on. 210 GSM

Log onto www.bizcollection.com.au
TYPE: Polo. SITE SEARCH CODE: P800

Colours include: Snow Marle, Grey Marle, Mid Jade, Ultra White, Fuchsia, Orange, Navy, French Blue, Forest, Red, Black, Spring Blue, Maroon, Purple, Apple Green, Gold

P800 - UNISEX sizes:	<i>S</i>	<i>M</i>	<i>L</i>	<i>XL</i>	<i>2XL</i>	<i>3XL</i>	<i>5XL</i>
HALF CHEST (CM)	52	55	58	62	65	71	79

PLEASE DETACH

NAME:

Email:phone:.....

PLEASE PRINT

REQUESTED SIZE: REQUESTED COLOUR:

Please post to:

.....VIA REGISTERED/ORDINARY MAIL

OR I will collect at the Monthly public talks program or directly from Secretary at Clarence Park see phone number below to organise (no postage and packaging then required).

POLO SHIRT WITH LOGO	\$29	\$29
TO SEW ON POCKET (optional)	\$3.50	
REGISTERED MAIL postage only	\$12	
ORDINARY MAIL postage only (for two shirts \$8.50)	\$5.80	
POST PACK (for two shirts \$1.35)	\$1.10	
total enclosed/forwarded electronically (please indicate which method of payment - shirts will not be posted until payment is received)		\$

Cheques to be made out to Butterfly Conservation SA Inc.
Please forward payment to:
Treasurer, Butterfly Conservation SA Inc.,
5 Oakleigh Road,
MARION. 5043 SOUTH AUSTRALIA
Direct Debit details: BSB 805-022
Account No: 02247994
Account Name: Butterfly Conservation SA Inc.

To assist us to keep track of orders IF YOU DIRECT DEBIT, PLEASE advise Mike via email at mima@esc.net.au.

PLEASE ALLOW A MINIMUM OF FOUR WEEKS DELIVERY
Phone Secretary Jan 8297 8230 for queries.



continued from page 1.

down the ant hole. The relationship goes beyond the larval stage. A foraging ant will approach and inspect the adult and then go on its way with little or no resistance from the butterfly. Once I watched an ant approach a male and after a short period he flicked the ant a distance of about a foot with one of his legs.

At Hackham there appear to be two generations of the small copper butterfly a year. A smaller one in the spring with the odd specimen through summer until the first autumn rains come. In March 2010 I observed three different emergent times, each on the first few sunny days just after rain.

They were present for about three to four weeks and then seemed to disappear. In early October this year they were back, and they could be seen feeding on the neighbour's lantana bush and also flying around the lawn.

Over the years I have searched for this insect in many places and have found the food plant to be quite common, but without the presence of the ants the female will not lay her eggs.

After all this time its hard to believe they were living in my front yard all along.

REFERENCES

- 1 BCSA newsletter no. 39 Oct 2010
- 2 FISHER, R. H., 1978. Butterflies of South Australia. Government Printer: Adelaide



Photos: Andrew Lions

Top - caterpillar host plant Yellow Wood Sorrel *Oxalis perennans*

Newly emerged larva

Mature larvae with *Iridomyrmex* ant

WITTUNGA BUTTERFLY GARDEN

This garden is a registered butterfly site and contains local providence caterpillar food plants and nectar plants. The nearby garden beds full of flowering plants provide a ready supply of nectar for the adult butterflies.



NOTES

WALKING SA extends an invitation to people to participate in the Opening of the Walking Season 2011. This major event will be held on 3rd April from 10am - 3pm at the Tea Tree Gully Oval in Adelaide's northeastern suburbs.

The opening is at 1pm in conjunction with the Friends of the Heyson Trail who will be celebrating the 25th anniversary of their organisation.

Is any member attending this event who may like to promote the Friends of GVD with a stall?

FRIENDS FORUM 2011 West of the Middlebacks 2-5 Sept. .

ANNUAL SHOREBIRD COUNT request for volunteers. Go to www.shorebirds.org.au for further information.

AUSTRALIAN PAINTED SNIPE SURVEY volunteers wanted. Further information www.birdsaustralia.com.au/our-projects/australian-painted-snip.html.

SEED COLLECTION WORKSHOPS Monday 7 March at Stirling, Sat. 2 April Normanville. To register your interest call Trees for Life 8406 0500.

CLELAND RESTORATION VOLUNTEER GROUP second sunday of each month 9.30-12.30, meet Cleland Wildlife carpark. Just turn up! Further info: Kat Mroczek DENR 8130 9064.

THREATENED PLANT ACTION GROUP to become involved in hands on work in National Parks and save some threatened plant species contact Tim Jury 08 7127 4630 for further information.

FREE WORKSHOPS though Volunteering SA

Information at www.volunteersa.org.au.

Tues 8 Feb 9.30-12.30: 'Skills for Committee and Board Members' Mt.Barker.

Tues 8 Feb 9.30-12.30 'Introduction to Volunteer Management' Adelaide.

Thurs 10 Feb 1-4: 'Developing Grant Applications' Gawler.

Thurs 10 Feb 9.30-12.30 'Recruiting and Retaining CALD Volunteers' Adelaide.

Tues 22 Feb 9.30-12.30 'Connecting with Older People' Woodville.

Wed 23 Feb 9.30-12.30 'Introduction to Effective Communication' Brighton.

Fri 25 Feb 9.30-12.30 'Enhancing Customer Service skills' Aldgate.

'**THE AUSTRALIAN NATIVE PLANT GUIDE**' by Peter Yau and Tim Langdon is now available as an application on your iPhone, iPad or iPod Touch. For information enter 'native plant guide' in the search box at the Apple store on your iPhone.

SOUTH AUSTRALIAN HERITAGE FUND GRANTS 2011-12 now open. Applications close Mon 28 Feb. 2011. www.heritage.sa.gov.au/conserving/grants.html

BUTTERFLY SITES IMAGES AND NOTES

If you have a butterfly garden please send in photos and some information about your garden as we would like to feature a garden in each issue of our Newsletter

PROPOSED EXCURSION

Where?

To a site near Purnong on the River Murray where the White-veined Skipper *Herimosa albovenata* is known to fly in mid September.

When?

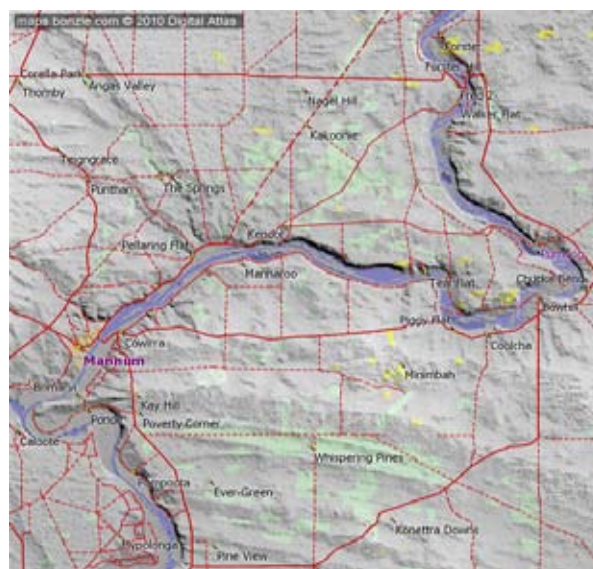
On the weekend of either 17th or 24th September, 2011.

Expedition leader will be Mike Moore.

This trip is still in the planning stages and could be a day trip or it could be a weekend trip where we incorporate a visit to nearby fossil sites.

If you know of interesting places to visit in the vicinity of Mannum, Walkers Flat and environs please contact the Secretary Jan Forrest.

Watch for further details of this excursion in the next newsletter.



BUTTERFLY GARDENING DVD A film about attracting native butterflies to your area

Congratulations to Tracy Baron and Carolyn Herbert, who on their own initiative have produced a wonderful DVD on Butterfly Gardening.

An order form will be included in the next newsletter however late advise from Carolyn is that the DVD may be purchased from

PO Box 103 Melrose Park BC, SA 5039
or, email your order to: tracy.baron@optusnet.com.au
and an invoice will be sent with your order.
ABN 84854452754

Payments can be made by cheque or money order, made out to Tracy Baron & Carolyn Herbert or directly deposited to account BSB 105-141 Account # 040 038 240. Please use a reference number and record on the order form.

Cost of the DVD is \$25

there are two versions - 'community' and 'school', when ordering please advise which version you require..

Orders will not be dispatched until payment is received.

‘Antarctic Terror’ *Vanessa itea* now lives at home

By member Andrew Lines

My introduction to this fine butterfly was in the early ‘70’s”. I had a keen interest in insects. A friend had an old crumpled unpinned specimen in his collection which he called an “Antarctic Terror”. As a young lad, this was always a prized addition to my collection, seemingly rare and hard to catch.

Along with Painted Lady’s and Meadow Argus, I have found the Australian Admiral to be one of the most common butterfly’s to be encountered during early Spring.

While walking through bushland, they can be seen singularly or more commonly in small groups up to six to seven feeding and flying around flowering Yacca spikes, or at the base of gum trees in two’s or threes feeding on sap flow’s. They can be found at the same location for up to four to five weeks feeding, perching and taking short flights. Their flight is swift and direct when threatened or patrolling in large areas, but when in large groups around the food plant or at a food source, such as Yacca’s; their flight can be a lot slower and relaxed.

For the last five years I have grown a reasonable patch of Stinging Nettles in my veggie patch, and in early August I have frequent visits from males and females. Although I have not seen them mating I know the females have been laying eggs, they flutter over and through the Nettles landing five to six times and often lay an egg. When doing so she would reverse up to the edge of the selected leaf and lay an egg on the underside, pause for a moment and fly off to do it again on another leaf.

Regularly they sun bathe on the top of the Nettles or Broad Beans for up to 15 minutes or so. Some would fly over the fence only to return 30 to 45 minutes later, others would rest on the Gum Tree, my shed or feed from the *Hardenbergia* (pronounced Harden-berjia) creeper.

The larva construct a shelter by rolling a leaf into a tube and joining the edges with silk, making new ones as they grow in size. Young larva only seem to feed at night, but larger larva also feed during the day (the blackbirds seem to like them). Upon maturity some will pupate on the food plant, but at least half will travel some distance to the fence, side of the house or some other object (my shed door had nine pupa attached to the inside of it at one stage).

A mature larva was seen head downwards resting on the house wall, after a short while it had turned around and began to make a silken pad, slowly moving its head from the middle to the side then back to the middle, to the other side and then back to the middle, slowly building up the silken pad. This took just over two hours to complete.



The larva then turned itself around and positioned its back pro-legs over the pad and proceeded to “wiggle”, “pump” and grind until it seemed comfortable. For the next hour it hung there; a small shock followed by a series of wiggles or walks (towards the head), within an hour the head was well turned. By the end of the next day it had pupated.



The colour of the pupa can vary considerably; on the food plant they can be gold to a golden-brown colour with black markings whereas on other objects or plants they are shades of brown or black.



After studying them for some time, I have noticed how they interact with each other. Males will set up a territory or perch on a tree or the veranda and he will know what other large insects are about, within at least a 15 metre span. In fact I have been approached by males my self quite often, one will fly up to you, around you and if you stand still, he will land on you. They are in fact investigating something new in their territory.

Often they will fly and have short chases with each other and then will return to their perch, they are waiting for females to arrive.

They are a striking and impressive medium sized insect with their dark bronze colour, cream markings and graceful flight.

Despite the Stinging Nettle they are a joy to have in my backyard.

Keep on Butterfly gardening



Photos: larva, pupa, underside adult Lindsay F. Hunt
upperside adult Robert H. Fisher

AUSTRALIAN PLANT SOCIETY SHOW WAYVILLE OCTOBER, 2010



Promoting Butterfly Conservation at different shows would not be possible without the help of the members who give up their time to assist in looking after our stall. Very many thanks go to those members, in particular Richard Rowlands, Roger Grund, Gerry Butler, Joan and Keith Caldicott, Pam DiLorenzo, Suzie Clarke and others.

Photo: new committee member Gerry Butler at the BCSA stand.

GARDENING AND OUTDOOR RENOVATION SHOW

If you can help at the **GARDENING AND OUTDOOR RENOVATION SHOW** at the Adelaide Showgrounds **WAYVILLE** on April 15th, 16th or 17th please contact Secretary Jan Forrest 82978230 or email forrestjan@adam.com.au, advising which day and if morning or afternoon.

Our stall number is G11 in the Wayville Pavilion, not far from the Gardening Seminars.

BUTTERFLY CONSERVATION SA Inc.

Chairman: David Keane

Secretary and Newsletter Editor: Jan Forrest OAM C/- South Australian Museum, North Terrace, ADELAIDE, 5000 ph H (08) 82978230.

email <jan.forrest@samuseum.sa.gov.au> or <forrestjan@adam.com.au>

Treasurer : 5 Oakleigh Road, MARION. 5043 S.AUST.

OUTREACH PROGRAM

The full exhibition and AO size panels from the Exhibition "Where have all the Butterflies gone?" are available from Jan Forrest at the South Australian Museum for use by Landcare and other Conservation groups at seminars, conferences and workshops or just for display. Included are five introductory panels, and seventeen panels from seven habitat areas: Coastal, Grasses, Mallee, Urban, Migration/Vagrant, Eucalyptus Forrest/Woodland, Arid, Wetland and Lower South East.

DIARY DATES

COMMITTEE MEETINGS - Meetings are normally held bi-monthly (usually the second Monday of the month) at 6.00pm in the Urrbrae Wetlands Resource Centre, Cross Roads, Urrbrae or at a committee members home. All members are welcome to attend. If you would like to attend please contact Secretary Jan Forrest.

Next Committee Meeting: 14th March, 30 Churchill Ave., Clarence Park, 6.30pm

NEW PUBLIC TALKS PROGRAM: first Tuesday March - Nov.,
Clarence Park Community Centre 6.15pm for a 6.30pm start to 8.30pm.
First talk: 1st March Nicholas Birks 'Birds of Prey' .

WEB SITES

"Butterfly Gardening" - www.butterflygardening.net.au

'Butterfly Conservation SA Inc.' <http://www.chariot.net.au/~bcsa/index.htm>

'South Australian Butterflies' (Roger Grund private site)

- <http://www.chariot.net.au/~rgrund/index.htm>

'Butterfly Watch' and 'Butterfly Challenge' - SAMuseum website

www.samuseum.sa.gov.au then click on 'Whats On' then 'online exhibitions'.

Teacher Resources (Jackie Miers) - http://www.teachers.ash.org.au/jmresources/butadelaide/Butterflies_of_Adelaide.html

WELCOME TO NEW MEMBERS:

Raelene Schmitke

John and Fleur Cook

Roger and Anne Green

Dan Monceaux & Emma

Sterling

Bret Robinson

Philip Weinstein

Joanne Brame

Jillian Brodyk

Margie Humphry

Graham Owen

